

AI Test Results from testers.ai



The Anthropic app's HOME page presents a mixed bag. Functionally, it seems to be operating, but a swarm of accessibility bugs drags down the overall experience. Issues like missing focus indicators, generic link text, and unverified 'skip to' link functionality create barriers for users with disabilities. Additionally, usability concerns arise with the missing top navigation bar and API section on mobile devices. A simple update to the copyright notice is also overdue.

Best Aspects

The app appears to function, offering a foundation for improvement.

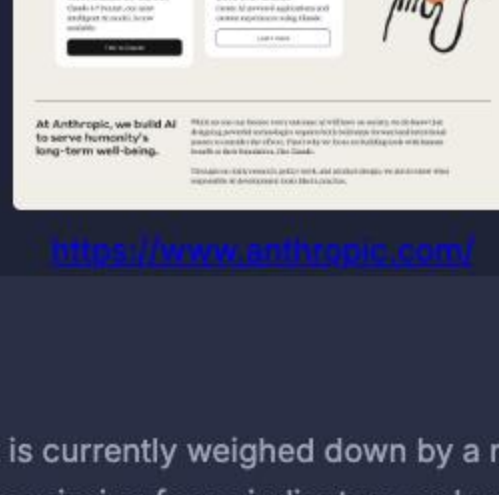
Areas for Improvement

Numerous accessibility bugs and usability issues (especially on mobile) seriously degrade the user experience.

Quality Summary

HOME

0.42 seconds



www.anthropic.com

Detailed Analysis

The Anthropic app's HOME page shows potential but is currently weighed down by a number of issues, primarily in the area of accessibility. The sheer volume of accessibility bugs—ranging from missing focus indicators and aria labels to generic link text and unverified 'skip to' link functionality—raises concerns about the app's commitment to inclusivity. Beyond accessibility, the missing top navigation bar and API section on mobile devices impact usability, making it difficult for users to navigate and access key features on smaller screens. The outdated copyright notice, while minor, contributes to a perception of neglect. Addressing these issues comprehensively is essential to enhance the app's overall quality and user experience. The truncated text with ellipses bug is also a usability issue to be addressed.

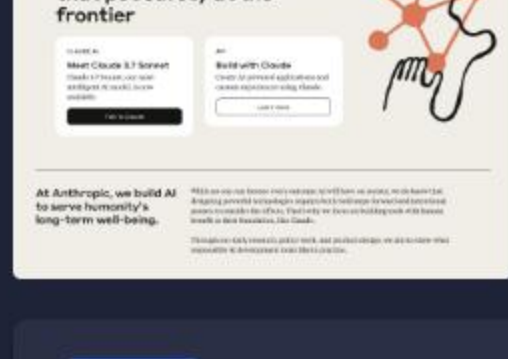
Key Suggestions

- Conduct a comprehensive accessibility audit using WCAG guidelines.
- Implement automated accessibility testing as part of the development process.
- Prioritize mobile-first design principles to ensure a consistent user experience across devices.
- Gather feedback from users with disabilities to identify and address accessibility barriers.

Priority Improvements

1. Implement clear visual focus states for all interactive elements to meet WCAG standards.
2. Add appropriate aria-labels to the logo and other relevant elements in the header to improve screen reader accessibility.
3. Replace generic link text with descriptive alternatives that provide context for screen reader users.
4. Verify and fix the functionality of 'Skip to main content' and 'Skip to footer' links to ensure proper keyboard navigation.
5. Restore the top navigation bar and API section on mobile devices to improve usability on smaller screens.
6. Address the text truncation issue by either adjusting the layout or using a more appropriate text display method.
7. Update the copyright notice in the footer to reflect the current year.

Issues Found by AI Testers



HOME

Isabella
Usability Tester

Missing Clear Visual Focus State on Interactive Elements

Priority: 7/10 Confidence: 8/10

WCAG accessibility

Why is this a bug?
Interactive elements, such as links and buttons, do not have a clearly defined visual focus state when navigated to using the keyboard. This makes it difficult for keyboard users, including those with motor impairments, to understand which element is currently selected. This violates WCAG 2.4.7 Focus Visible.

Suggested Fix
Implement a clear and visible focus state (e.g., a contrasting border or background color change) for all interactive elements when they are focused via keyboard navigation.

Why Fix This?
Improves accessibility for users who rely on keyboard navigation, ensuring they can effectively interact with the page.

Route To
Frontend Engineer

Sophia
Content Tester

Outdated Copyright Notice

Priority: 8/10 Confidence: 9/10

Copyright Inaccurate Information

Why is this a bug?
The copyright notice at the bottom of the page indicates '© 2025 Anthropic PBC.', which is incorrect for the current year 2025.

Suggested Fix
Update the copyright notice to '© 2025 Anthropic PBC.'

Why Fix This?
An outdated copyright notice undermines the site's credibility and can potentially lead to legal issues.

Route To
Frontend developer

Adeela
Mobile Responsive Tester

Missing Top Navigation Bar on Mobile

Priority: 7/10 Confidence: 9/10

general usability

Why is this a bug?
The top navigation bar, including links like 'Claude', 'API', 'Solutions', 'Research', 'Commitments', 'Learn', 'News', and 'Try Claude', is completely absent on the mobile view. This severely hinders navigation and access to key site functionalities.

Suggested Fix
Implement a responsive navigation solution, such as a hamburger menu or a bottom navigation bar, to ensure users can access key site sections on mobile devices.

Why Fix This?
Loss of the navigation bar degrades the user experience on mobile devices, preventing users from easily exploring the site's content and services.

Route To
Frontend Engineer

Relevant Network Call
N/A

Aisha
Tester for Missing Aspects

'Skip to main content' link functionality not fully verified

Priority: 7/10 Confidence: 8/10

accessibility functional

Why is this a bug?
The 'Skip to main content' link is present, but it's crucial to verify that it actually focuses on a clearly identifiable main content area when activated. Without proper focus indication (e.g., a visible focus ring), keyboard users may not know where they've landed. The screenshot doesn't clearly indicate the main content area or whether it receives focus after skipping.

Suggested Fix
1. Verify the link's target ("#main-content") exists and contains the main content of the page. 2. Ensure that the target element receives focus when the link is activated. 3. Implement a visible focus indicator (e.g., a CSS outline) on the target element when it receives focus from the 'Skip to main content' link.

Why Fix This?
Failure to provide a functional 'Skip to main content' link significantly hinders keyboard navigation and accessibility for users with disabilities, violating WCAG guidelines.

Route To
Frontend Engineer

Aisha
Tester for Missing Aspects

'Skip to footer' link functionality not fully verified

Priority: 7/10 Confidence: 8/10

accessibility functional

Why is this a bug?
Similar to the 'Skip to main content' link, the 'Skip to footer' link needs verification. The screenshot doesn't indicate if the footer area receives focus when the link is activated, or if keyboard users are easily able to identify that they have skipped to the footer.

Suggested Fix
1. Verify the link's target ("#footer") exists and contains the page's footer content. 2. Ensure that the target element receives focus when the link is activated. 3. Implement a visible focus indicator (e.g., a CSS outline) on the target element when it receives focus from the 'Skip to footer' link.

Why Fix This?
Failure to provide a functional 'Skip to footer' link hinders keyboard navigation and accessibility, violating WCAG guidelines.

Route To
Frontend Engineer

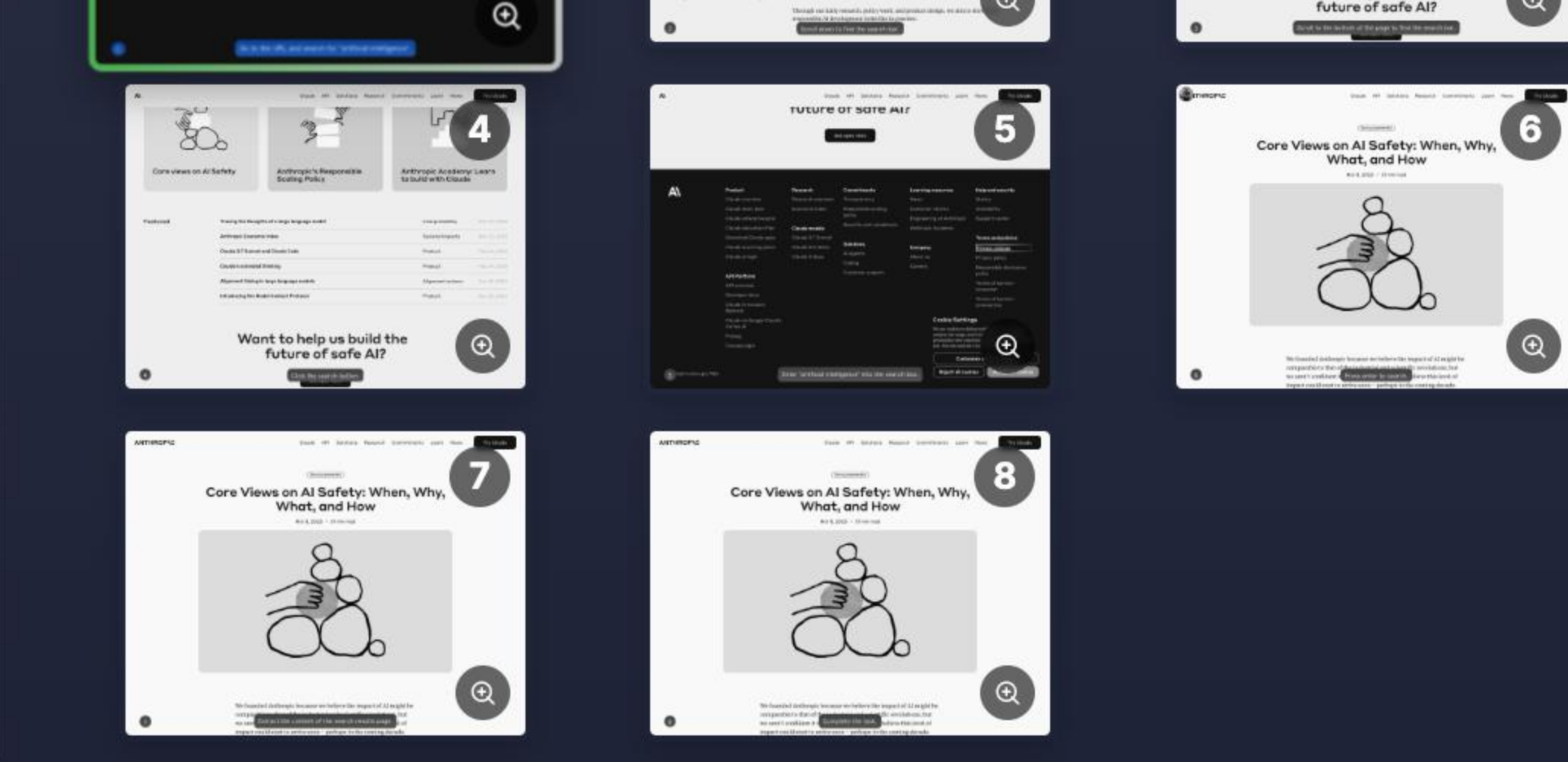
AI Generated Functional Test Results

Start Page: HOME



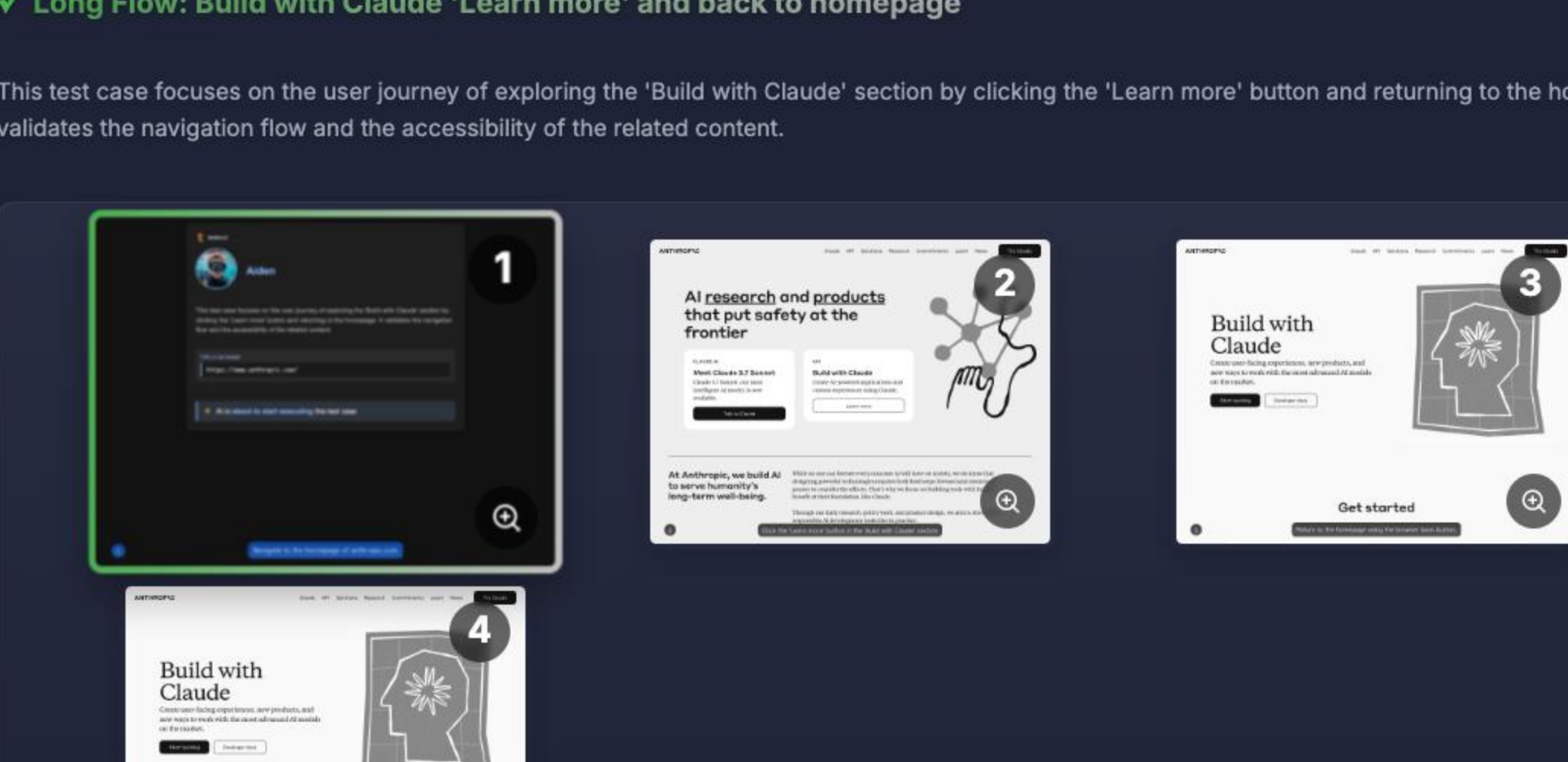
✓ Search for a valid query related to AI

This test verifies the search functionality returns relevant results for a valid query related to AI. It checks if the system correctly identifies and displays relevant content based on the search term.



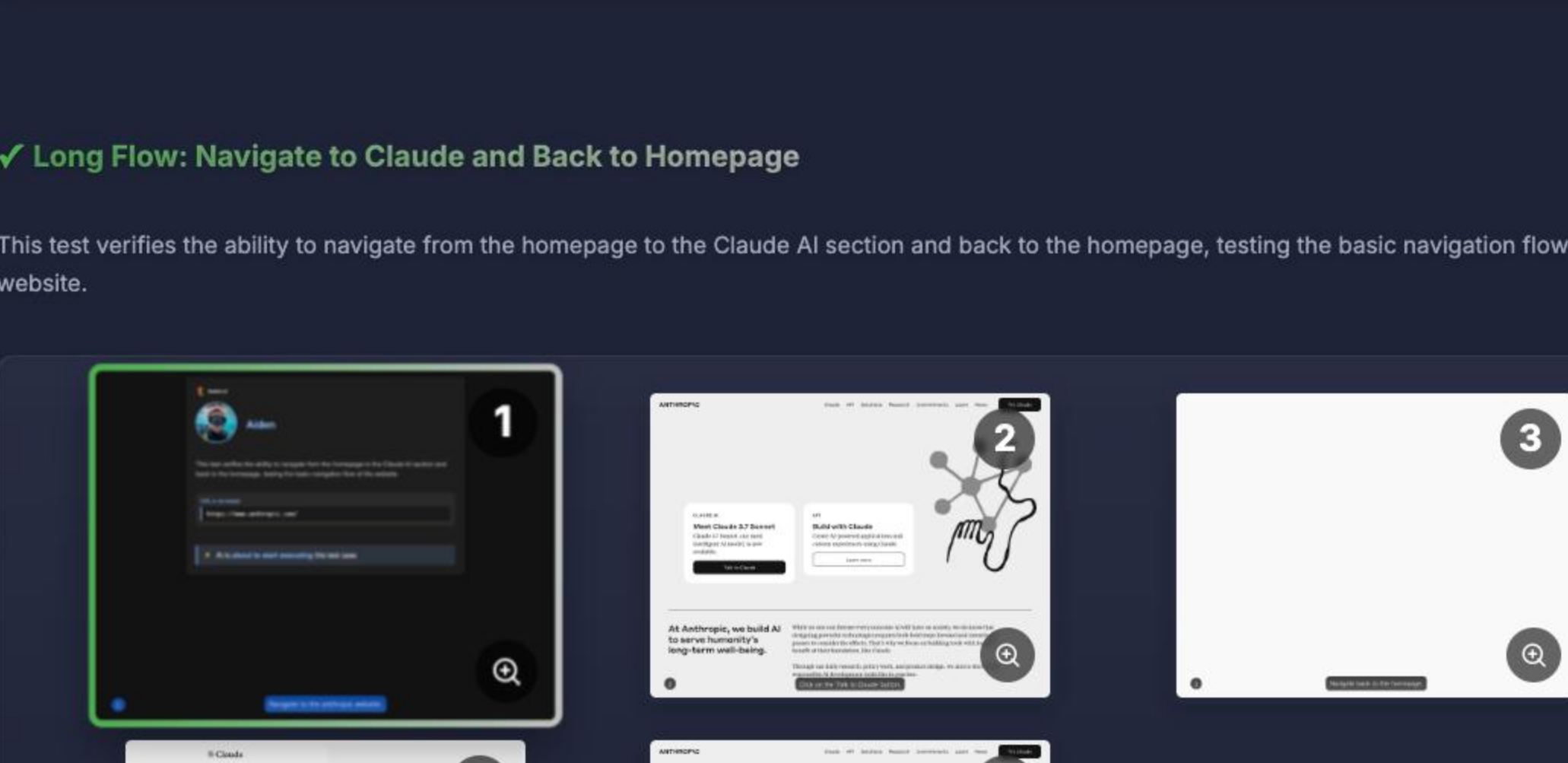
✓ Long Flow: Build with Claude 'Learn more' and back to homepage

This test case focuses on the user journey of exploring the 'Build with Claude' section by clicking the 'Learn more' button and returning to the homepage. It validates the navigation flow and the accessibility of the related content.



✓ Long Flow: Navigate to Claude and Back to Homepage

This test verifies the ability to navigate from the homepage to the Claude AI section and back to the homepage, testing the basic navigation flow of the website.



User Persona Feedback Summary

HOME



The primary purpose of this webpage is to showcase Anthropic's AI research and products, particularly the Claude AI model, while emphasizing their commitment to AI safety and responsible development.

<p>Overall Score</p> <p>★★★★★</p> <p>The website effectively communicates Anthropic's mission and offerings, particularly around Claude. The design is clean and modern, but there's room for improvement in making complex research more accessible to a broader audience.</p>	<p>Visual Design</p> <p>★★★★★</p> <p>The visual style is appealing and professional, creating a sense of trust and innovation. Perhaps more diverse imagery would be beneficial.</p>	<p>Usability</p> <p>★★★★★</p> <p>Easy to navigate and find information, though some links could be more descriptive.</p>	<p>Content Quality</p> <p>★★★★★</p> <p>Informative and well-written, but some sections are quite technical. I think it could be made more accessible to non-experts.</p>
--	---	---	---

Individual User Persona Feedback

<p>Alice Johnson, 32</p> <p>Persona: Alice is a software engineer working at a tech startup. She's passionate about leveraging AI to build innovative applications.</p> <p>Overall Rating</p> <p>★★★★★</p> <p><i>As a software engineer, I'm very interested in the API offerings and what Claude has to offer to software developers. I am very much interested in building solutions based on AI.</i></p> <p>Actions Performed</p> <ul style="list-style-type: none"> • Explore the API documentation to understand how to integrate Claude into her projects. • Read about the Claude enterprise plan to see if it is the right solution for her team. <p>Suggestions</p> <ul style="list-style-type: none"> • Add more code examples to the API documentation. • Create a community forum for developers to share tips and ask questions. • Create more accessibility options for the website. 	<p>Kenji Tanaka, 55</p> <p>Persona: Kenji is a tech enthusiast and avid follower of advancements in artificial intelligence. He is currently retired and enjoys exploring new technologies.</p> <p>Overall Rating</p> <p>★★★★★</p> <p><i>As a technology enthusiast, I want to see the latest advancements in AI research and development. I like to see the research papers from the company and where AI is headed.</i></p> <p>Actions Performed</p> <ul style="list-style-type: none"> • Read about the latest research publications on AI safety. • Explore the 'About Us' section to learn more about Anthropic's mission. <p>Suggestions</p> <ul style="list-style-type: none"> • Provide simplified explanations of research findings. • Create interactive demos to showcase Claude's abilities. • Add options to adjust font size and contrast. • Add more images to increase user interaction. 	<p>Emily Carter, 25</p> <p>Persona: Emily is a recent graduate with a degree in data science. She's eager to find a job in the AI field and is looking for companies with a strong ethical focus.</p> <p>Overall Rating</p> <p>★★★★★</p> <p><i>As a recent graduate looking for a job in the AI field, I want to see if there are any open roles at the company, and I am interested in finding companies with a strong ethical focus.</i></p> <p>Actions Performed</p> <ul style="list-style-type: none"> • Browse the 'Careers' page to see if there are any open roles. • Read about Anthropic's Responsible Scaling Policy. <p>Suggestions</p> <ul style="list-style-type: none"> • Add more information about the company's culture. • Include testimonials from current employees. • Add options to adjust color contrast. • Add more videos of interviews with staff.
---	--	--

Print Report